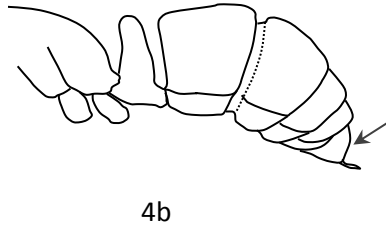
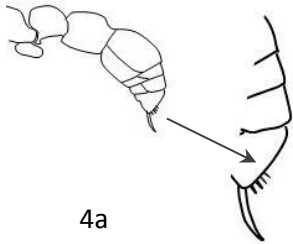
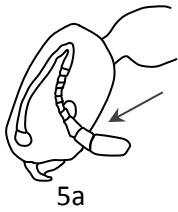


- 4 last segment of gaster with a row of small spines along outer and trailing edge (4a);
 gastral constriction strong giving the illusion of a 2 segmented petiole;
 eyes absent Dorylinae
 (*Ooceraea biroï*)
- last segment of gaster smooth in profile (4b)..... 50 Ponerinae

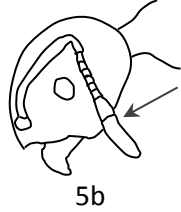


Myrmicinae

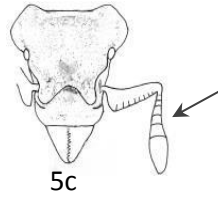
- 5 Antennal club 3-segmented (5a)..... 6
- Antennal club 2-segmented (5b)..... 9
- No distinct antennal club and/or with 6 antennal segments or less (5c) 10 (*Strumigenys* spp.)



5a

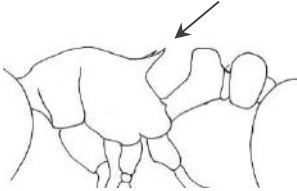


5b

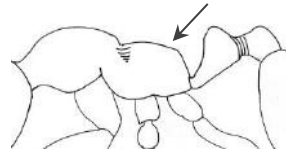


5c

- 6 Propodeum with a distinct pair of spines (6a)..... 7
- Propodeum smooth and without a spine (6b)..... 14 (*Monomorium* and allied spp.)

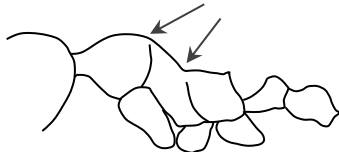


6a

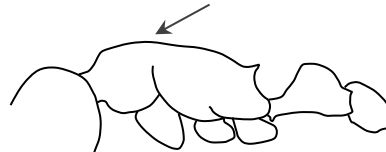


6b

- 7 Mesonotum with a deep and wide clef between the pronotum and propodeum; pronotum rounded and clearly higher than propodeum (7a)..... 21 (*Pheidole* spp.)
- Pronotum and propodeum on the same horizontal plane (7b)..... 8

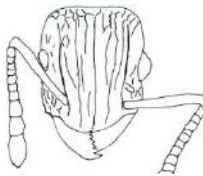


7a

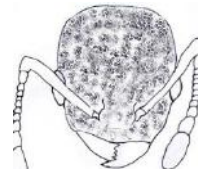


7b

- 8 Antennal scrobes present; front of the head between antenna sculpturing striate; body sculpturing variable (8a)..... 23 (*Tetramorium* spp.)
- Antennal scrobes absent, head and body sculpturing not striate (8b)..... 27 (*Cardiocondyla* spp.)



8a

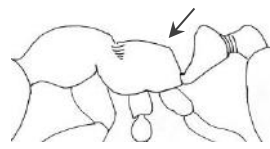


8b

- 9 Propodeum with a distinct pair of spines (9a)..... *Wasmannia auropunctata*
 Propodeum without spines (9b) 31 (*Solenopsis* spp.)

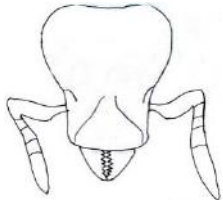


9a



9b

- 10 Head heart-shaped, mandibles short (10a)..... *Strumigenys membranifera*
 Head heart-shaped, elongated mandibles (10b)..... 11

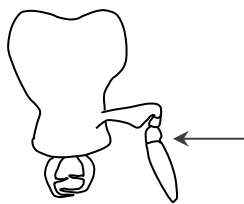


10a

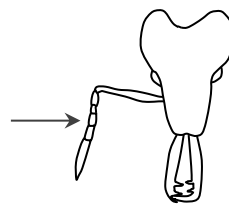


10b

- 11 Antenna (including the scape) composed of 4 segments (11a); head and dorsal surface of the body densely covered with large, bulbous, fan-shaped setae..... *Strumigenys emmae*
 Antenna (including the scape) composed of 6 segments (11b); setae variable, may or may not be present..... 12

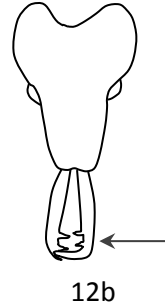
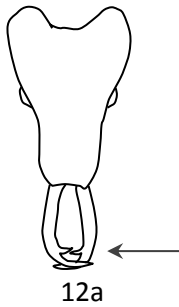


11a



11b

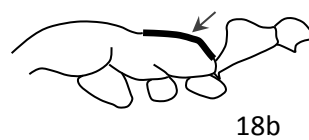
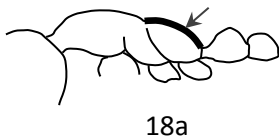
- 12 Mandibles armed with 2 teeth; fan-shaped setae not present (12a)..... 13
 Mandibles armed with 3 teeth; sparse, fan-shaped setae present
 on the front of the head (12b)..... *Strumigenys rogeri*



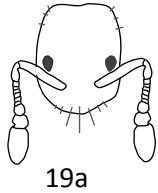
- 13 Pronotum covered with curved “woolly” non-erect hairs..... *Strumigenys godeffroyi*
 Pronotum with sparse erect hairs..... *Strumigenys lewisi*
- 14 Head and thorax finely textured, giving a uniform dull appearance..... 15
 Head and thorax smooth and shiny..... 17
- 15 Head and thorax yellow or orange, or light brown..... 16
 Head and thorax dark brown *Monomorium indicum*

- 16 head, thorax and petiole with pairs of short stiff setae..... *Monomorium pharaonis*
 Head and thorax with fine hairs (not erect)..... *Monomorium dichroum*
- 17 Head and gaster uniformly colored, both distinctly darker than thorax..... *Monomorium floricola*
 Head not the same color as gaster (gaster may be bicolored) OR body
 uniformly colored..... 18

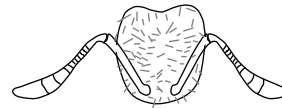
- 18 Propodeum smoothly convex in profile (18a)..... 19
 Propodeum with distinct dorsal and posterior planes (18b)..... 20



- 19 Head broadly rectangular in front profile, frontal portion of head hairless or nearly so (19a) *Monomorium orientale*
 Head with pronounced occipital lobes in front profile, covered in long hairs (19b)..... *Monomorium liliuokalani*

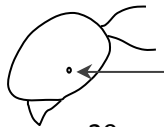


19a

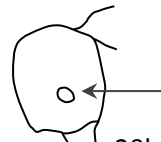


19b

- 20 Eyes very small, consisting of < 5 facets (20a)..... *Sylophopsis sechellense*
 Eyes normal, with > 5 facets (20b)..... *Trichomyrmex destructor*

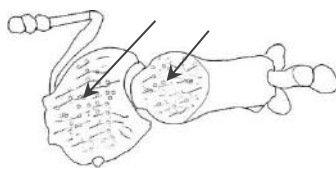


20a

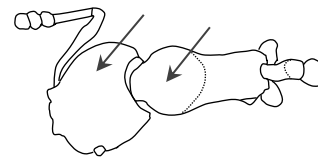


20b

- 21 Head, and thorax finely sculptured giving a dull appearance (21a)..... *Pheidole navigans*
 Head and thorax smooth and shiny in dorsal view (21b)..... 22

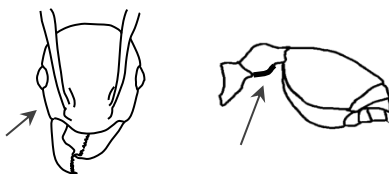


21a

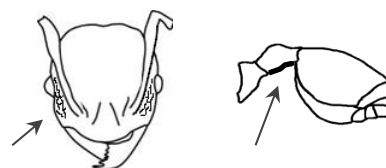


21b

- 22 Minor caste: Post petiole with ventral bulge, region of face between antenna and eyes smooth and shiny, usually with mild or no sculpturing (22a) however, occasionally noticeable sculpturing is present; Major Caste: Head with striate sculpturing except for the occipital lobes which are smooth and shiny..... *Pheidole megacephala*
 Minor caste: Post petiole never with a ventral bulge, region of face between antenna and eyes noticeably sculptured (22b); Major Caste: Head uniformly sculptured *Pheidole fervens*

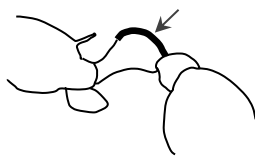


22a

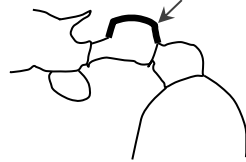


22b

- 23 Petiole rounded in profile (23a)..... 24
 Petiole blocky in profile (23b)..... 25
 Top surface of petiole wave-like (23c)..... *Tetramorium insolens*



23a



23b

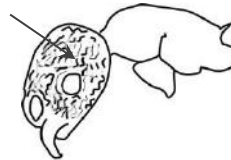


23c

- 24 Dorsal surface of entire body densely covered with long hairs; antennal scrobes smooth and shiny (24a) *Tetramorium lanuginosum*
 Dorsal surface of entire body with sparse long hairs (24b)..... *Tetramorium tonganum*



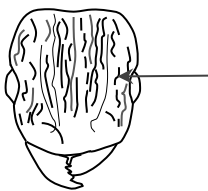
24a



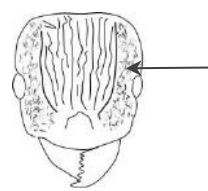
24b

- 25 Large, total length > 3 mm *Tetramorium bicarinatum*
 Smaller, total length < 3 mm..... 26

- 26 Antennal scrobes weakly defined, coarsely reticulated between and similar to the rest of the head when viewed from the profile(26a)..... *Tetramorium caldarium*
 Antennal scrobes distinct, finely reticulated and contrasting from the rest of the head when viewed from the profile (26b)..... *Tetramorium simillimum*

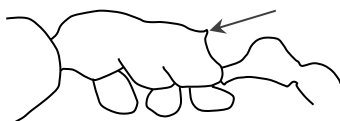


26a



26b

- 27 Propodeal spine short in profile (27a)..... *Cardiocondyla kagutsuchi/venustula**
 Propodeal spine moderate-long in profile (27b)..... 28



27a



27b

- 28 Anterolateral corners of post-petiole pointed in dorsal view (28a)..... 29
 Anterolateral corners of post-petiole rounded in dorsal view (28b)..... 30



- 29 All gaster segments equally dark *Cardiocondyla obscurior*
 All gaster segments not equally dark, tergites with some color variation *Cardiocondyla wroughtoni*

- 30 Dorsal profile of thorax interrupted by a distinct notch between the mesonotum and metanotum; ventral bulge present on the postpetiole (30a)..... *Cardiocondyla emeryi*

- Dorsal profile of thorax relatively smooth and without a notch between the mesonotum and metanotum; no ventral bulge present on the postpetiole (30b)..... *Cardiocondyla minutior*



- 31 Small, less than 2 mm; antennal segments between scape and club narrow, wider than high (31a).....33

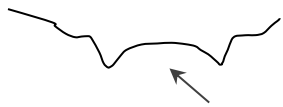
- Larger, > 2 mm; width of antennal segments between scape and club the same as, or longer than wide (31b) 32



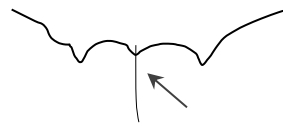
* *Cardiocondyla kastuguchi* and *C. venustula* must be separated via discriminant analysis on measurements of morphological features to reliably tell them apart. The two species have been grouped in this key.

32 Central clypeal tooth absent (32a); mandibles with three teeth or smooth (32b); lower portion of mesonotum often with a forward-facing tooth, Spine, or 'flap' (32c), majors with dis-proportionally large heads*Solenopsis geminata*

Central clypeal tooth present (32d), mandibles with four teeth (32e), lower portion of mesonotum never with a forward-facing tooth or spine (32f) head of major workers proportionally the same size as in minors, *Solenopsis invicta*
(not present in Hawaii)



32a



32d



32b



32e



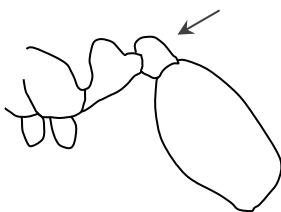
32c



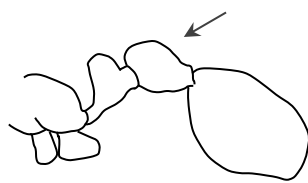
32f

33 Eyes reduced; post-petiole smaller than petiole (33a)..... 34

Eyes normal; post-petiole larger than petiole in profile view (33b)..... *Solenopsis globularia*



33a



33b

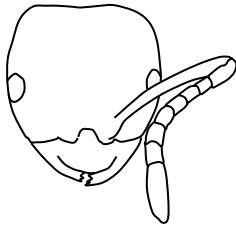
34 Body uniformly dark in color..... *Solenopsis papuana*

Body uniformly light *Solenopsis HI01*

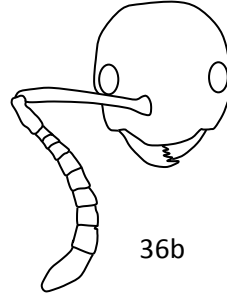
Formicinae

- 35 Small, total length <3 mm 36
- Total length 3 mm or more..... 38

- 36 Body color brown, antenna consisting of 9 segments including the scape (36a).. *Brachymyrmex* sp. nr. *obscurior*
- Body color yellow, antenna with 10 or more segments (36b)..... 37

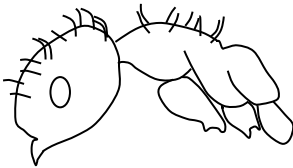


36a

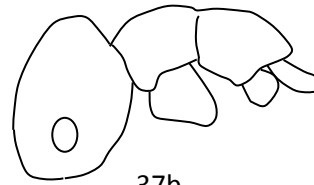


36b

- 37 Dorsal surface of thorax with pairs of erect setae (37a)..... 40
- Dorsal surface of thorax without pairs of erect setae (37b)..... *Plagiolepis alluaudi*



37a



37b

- 38 Face in frontal view covered with thick hairs (38a)..... 39
- Face in frontal view not covered with thick hairs
- (38b, fine hairs may be present) 42

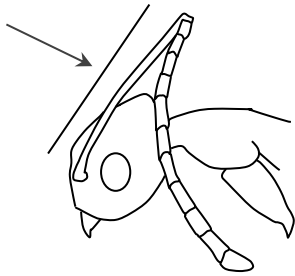


38a

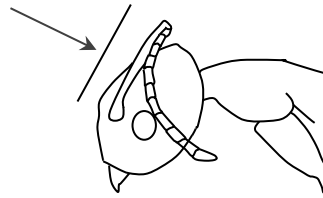


38b

- 39 Antennal scape long, more than 1.5 times the length of head (39a)..... 40
 Antennal scape less than 1.5 times length of head (39b)..... 41

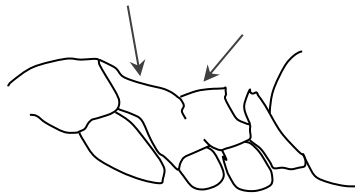


39a

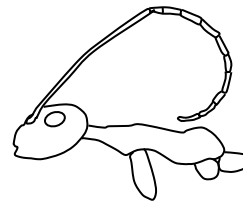


39b

- 40 Body covered with stiff black hairs; mesonotum narrow and with a steep slope, meeting the propodium at a wide angle in profile view; propodeum and petiole armed with blunt teeth (40a) *Lepisiota* sp.
 Body covered with stiff white hairs, mesonotum gradually sloping; propodium and petiole normal, not armed with teeth (40b)..... *Paratrechina longicornis*



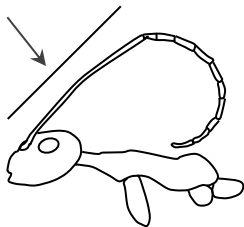
40a



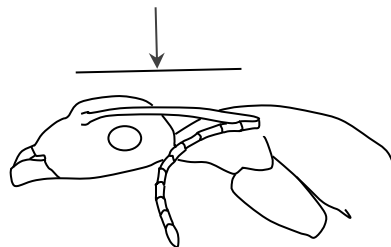
40b

- 41 Lower section of mesonotum with appressed setae *Nylanderia bourbonica*
 Lower section of mesonotum without setae, glabrous and shiny..... *Nylanderia vaga*

- 42 Antennal scape long, more than 2 times the length of head (42a)..... *Anoplolepis gracilipes*
 Antennal scape less than 1.5 times the length of head (42b)..... *Camponotus variegatus*



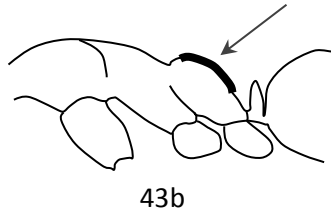
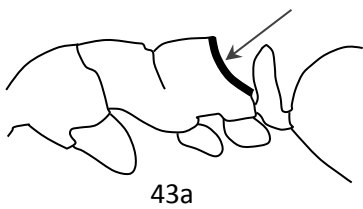
42a



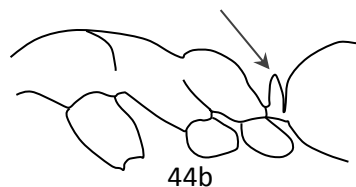
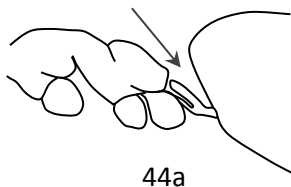
42b

Dolichoderinae

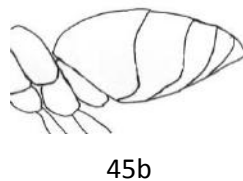
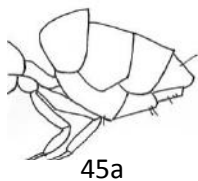
- 43 Rear face of propodeum distinctly concave (43a)..... *Ochetellus glaber*
 Rear face of propodeum flat or convex (43b)..... 44



- 44 Petiole reduced or absent, forward face flat or indistinct (44a) 45
 Petiole well defined, taller than wide (44b) *Linepithema humile*

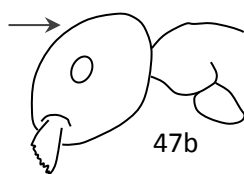
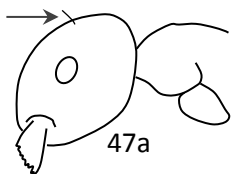


- 45 Gaster with 4 plates on the upper surface (5th tergite ventral) (45a)..... 46 (*Tapinoma* spp)
 Gaster with 5 plates on the upper surface (45b).....47 (*Technomyrmex* spp)



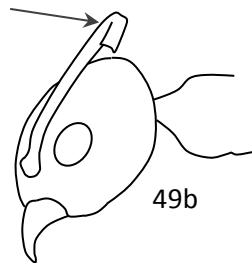
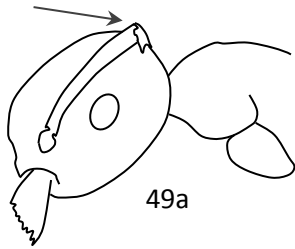
- 46 Head and thorax distinctly darker than gaster..... *Tapinoma melanocephalum* complex
 Head, thorax and gaster uniformly colored..... *Tapinoma sessile*

- 47 Occipital region of head above the eye with one or two erect setae (47a)
 this feature is best seen in profile view.....48
 Occipital region of head without erect setae (47b) 49



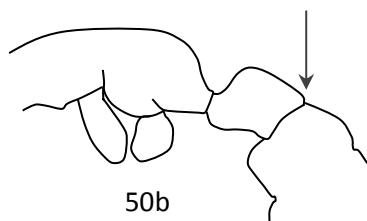
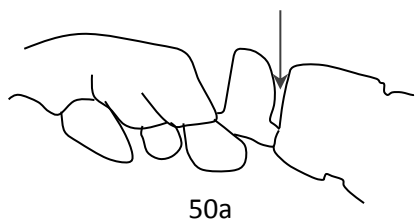
- 48 Tarsus of hind leg lighter in color than tibia..... *Technomyrmex difficilis*
 Tarsus of hind leg the same color as the tibia..... *Technomyrmex pallipes*

- 49 Scape short, extending to the rear margin of head when viewed in profile (49a).. ... *Technomyrmex albipes*
 Scape longer, clearly extending beyond rear margin of head when viewed in profile (49b).....*Technomyrmex vitiensis*

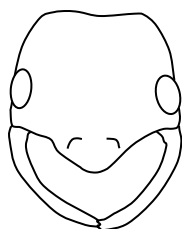


Ponerinae

- 50 Rear and front face of petiole distinct and well-defined (50a) 51
- Rear face of petiole broadly attached to gaster (50b) *Stigmatomma zwaluwenburgi*



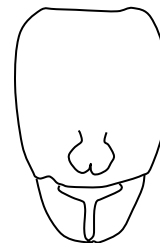
- 51 Mandibles long and slender (51a & b) 52
- Mandibles broadly triangular in frontal view (51c)..... 53



51a

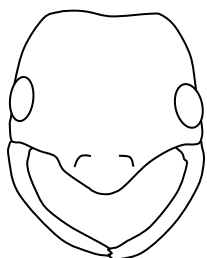


51b



51c

- 52 Occipital lobes indistinct; mandibles long, slender, curved inward, and originating from the far lateral margins of the head (52a)..... *Leptogenys falcigera*
- Well defined occipital lobes present; mandibles long, straight, and not originating from the far lateral margins of the head (52b)..... *Odontomachus nr. ruginodis*



52a



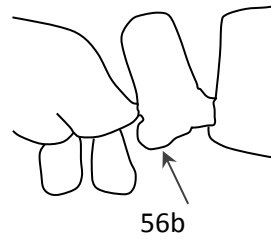
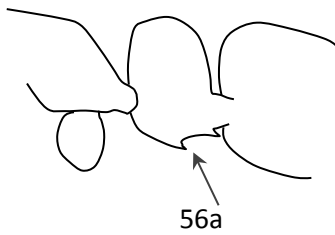
52b

- 53 Legs and antennae distinctly lighter in color than head and thorax..... 54
- Body, legs and antennae all the same color..... 55

- 54 Petiole roughly square when viewed in profile *Platythyrea punctata*
 Petiole much higher than wide when viewed in profile *Hypoponera opaciceps*

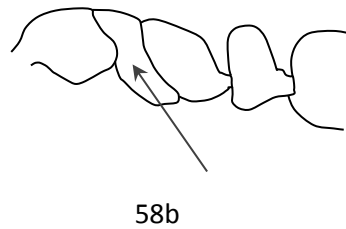
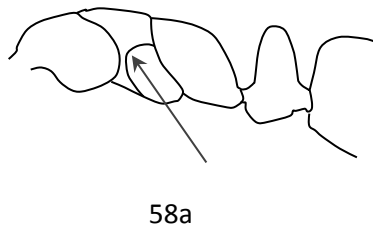
- 55 Eyes completely absent.....*Hypoponera zwaluwenburgi*
 Eyes small, consisting of a few facets..... 56

- 56 Ventral process of petiole with an acute angle (56a)..... *Ponera swezeyi*
 Ventral process of petiole a simple lobe (56b) 57



- 57 Color yellow..... 58
 Color brown..... 59

- 58 Mesonotum bisected by a distinct suture (anepisternal suture)
 in profile view, delineating the anepisternum from the rest of the
 mesonotum (58a) *Hypoponera HI01*
 Mesonotum without a distinct suture (58b)..... *Hypoponera ragusai*



- 59 Posterior margin of the ventral process on petiole highly skewed (59a)..... *Hypoponera opacior*
 Posterior margin of the ventral process on petiole gradually sloping (59b)..... *Hypoponera punctatissima*

