

Pacific Ant Program Taxonomy Workshop

Guam, 19-23 March 2012

Workshop Manual



Cas Vanderwoude¹

Michelle Montgomery¹

Brent Sheehan¹

Ross Miller²

¹- Hawai`i Ant Lab, Pacific Cooperative Studies Unit, University of Hawaii

²- University of Guam

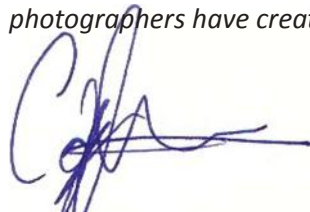


Aloha and welcome to the 2012 Pacific Ant Taxonomy workshop This project has been funded by the United States Forest Service (USFS) and is being carried out by the Division of Forestry and Wildlife, Hawaii (DOFAW) and the Pacific Cooperative Studies unit of the university of Hawaii (PCSU).

This training manual is the second in a series designed to provide useful information relating to prevention, surveillance, identification and management of invasive forest ants in the Republic of Palau, Federated States of Micronesia, Commonwealth of the Northern Mariana Islands and Hawaii. Forestry and other agencies from each country are collaborators in this project.

The manual has been designed to provide you with some basic information about identifying ant specimens you might collect. We hope you find this course both challenging and rewarding. Each of you has their own level of expertise in identifying insects, using a microscope, using species keys etc. so it is likely that some will find the course too fast-paced, and for others, maybe a bit slow. Please bear with this as there is no way to avoid it. Do not worry if you do not grasp everything in the course, the important thing is that at its completion, you know more than when you started!

Finally, we would like to gratefully acknowledge the tremendous contribution of Brian L. Fisher at the California Academy of Sciences for the images provided on www.antweb.org. Brian and all the photographers have created a great resource!



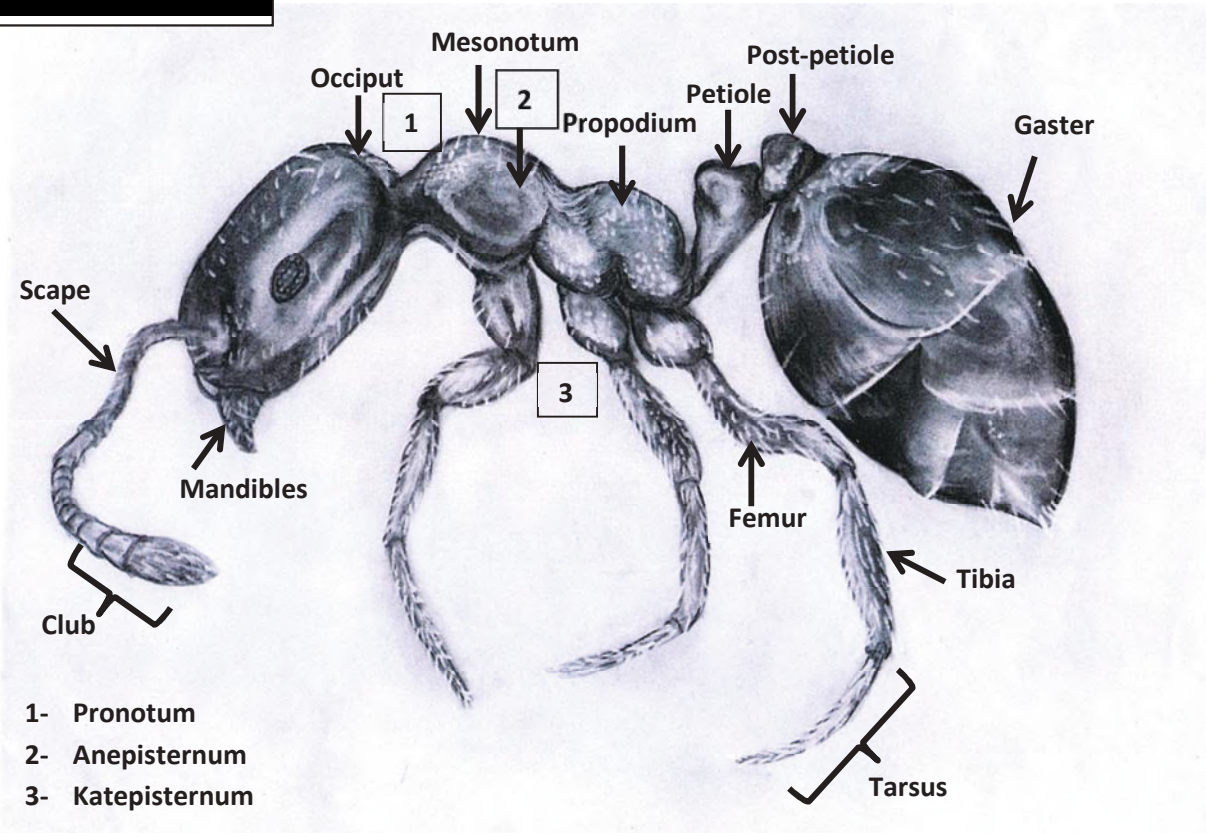
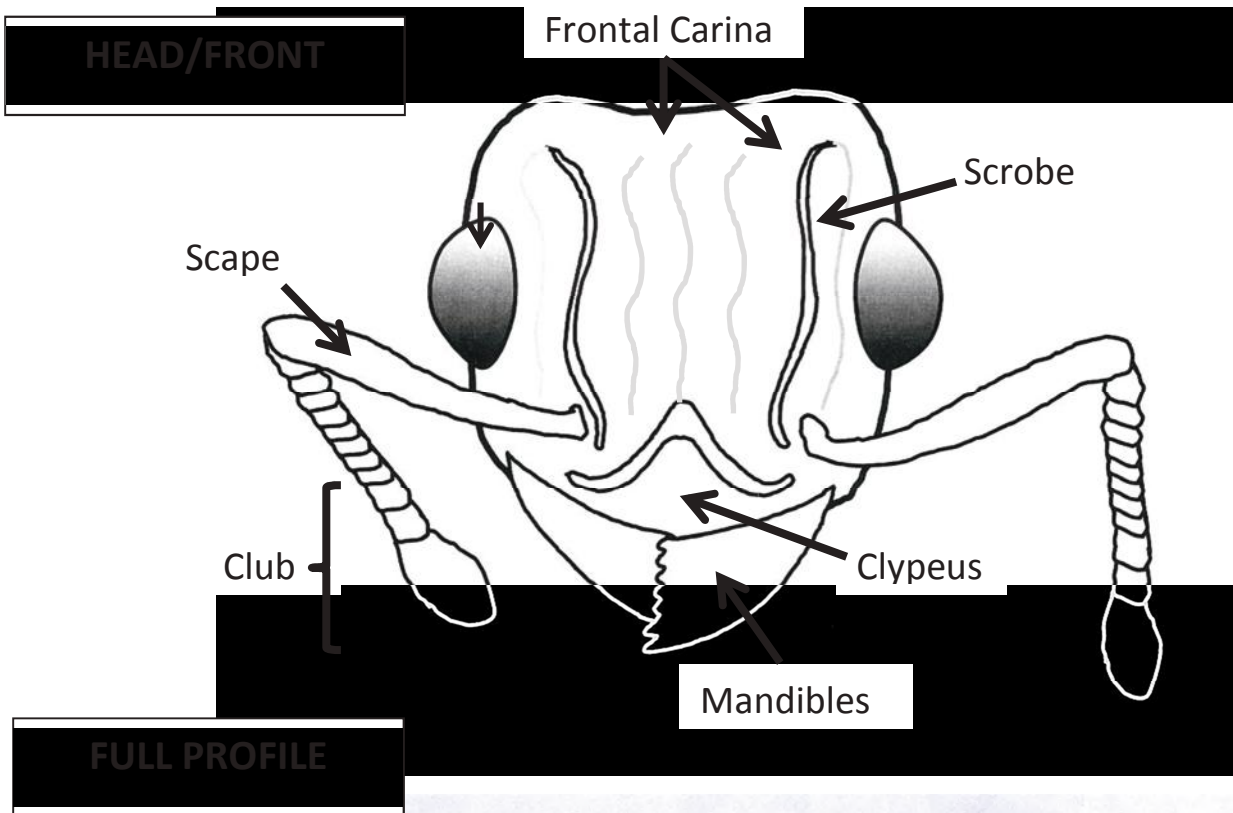
Cas Vanderwoude

*Hawai`i Ant Lab, Pacific Cooperative Studies Unit, University of Hawaii
16 East Lanikaula St Hilo
Hawaii USA 96720
Ph +1 808 989 9289 ; Fax +1 808 974 4148
Email casperv@hawaii.edu*

Contents

Morphological characteristics of an ant.....	3
Glossary of taxonomy terms.....	4
Key to ant genera of Micronesia	
Sub-families.....	5
Myrmicinae.....	6
Dolichoderinae.....	9
Formicinae.....	10
Ponerinae.....	11
Species Image Gallery.....	13
Useful references.....	27
Guidelines for specimen preservation.....	29

Morphological characteristics of an ant



Glossary of Helpful Terminology

(A Quick Check)

Antennal Scrobes – A depressed area on the front of the head where the antenna lie when in rest

Anepisternum – the area of the mesothorax

Appressed – laying flat against the body (i.e. appressed setae)

Clypeus – the part of the face that is directly above the mandibles (“upper lip”)

Clypeal Tooth – a pointed projection(s) on the clypeus. May be difficult to see

Gaster – the “butt” of the ant

Mandibles – the “jaws” of the ant

Mesonotum – the middle part of the thorax

Metanotum – the upper and front portion of the propodeum

Occiput (Occipital) – the back of the head. Behind where the ocelli are located on queen and reproductive ants

Petiole – the waist of the ant. May consist of 1 or 2 segments or may be completely absent.

Post-petiole – the second segment of the waist (if present)

Propodeum – The rear section of the thorax where the petiole (waist) connects.

Propodeal Spines – Spines (usually 2) that arise from the rear of the thorax (propodeum)

Reticulate – consisting of a network of veins that looks like a net or covered in fine bumps

Scape – the first segment of the antenna (long)

Suture – A line made by the connecting of 2 or more exoskeletal plates such as the separation between the mesonotum and propodeum

Tarsus – the segments of the leg that comes after the tibia

Tergites – Dorsal plate-like segments (i.e. gastral tergites)

Tibia – 3rd leg segment; segment after the femur

Thorax – the “body” of the ant