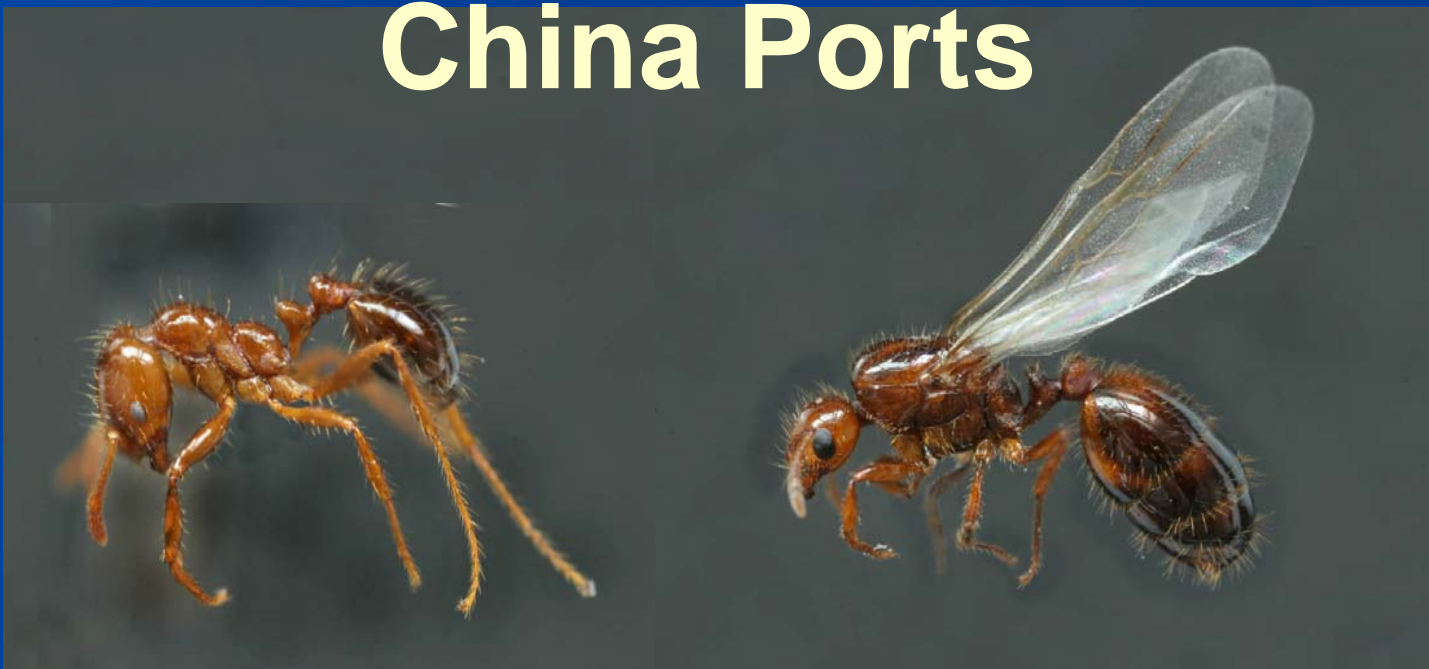




中国检验检疫科学研究院

Chinese Academy of Inspection and Quarantine

Intercept Data of RIFA from China Ports



Ying HUANG

IIAMW, Darwin, Apri. 29, 2010



Cargo and Containers from South America

Data period: 2005.5-2009.4

Totally 14 intercepts

Country	Intercept times	Goods	Live/dead
Argentina	7	logs	7 live
Chile	2	copper cathode	2 live
Guyana	2	logs	1 live + 1 dead
厄瓜多尔	1	Wood board	1 live
玻利维亚	1	logs	1 live
Columbia	1	logs	1 live



Cargo and Containers from US

Data period: 2005-2009

Totally 65 intercepts

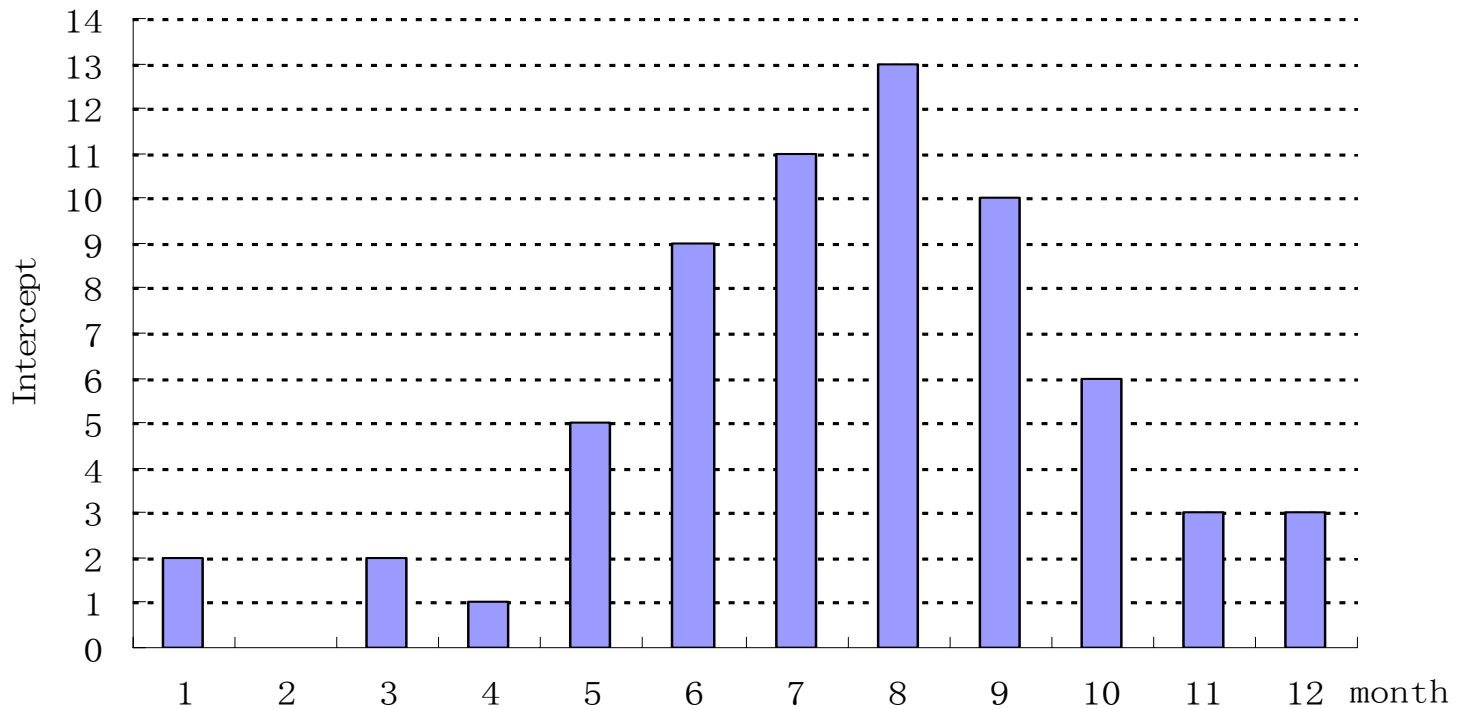
Live/dead: 73.8% are live workers
in some cases 50-100 individuals!

Known origin: Los Angeles / Long beach (California),
Tampa (Florida), Savannah (Georgia),
Norfolk (Virginia), New York, Seattle...



Cargo and Containers from US

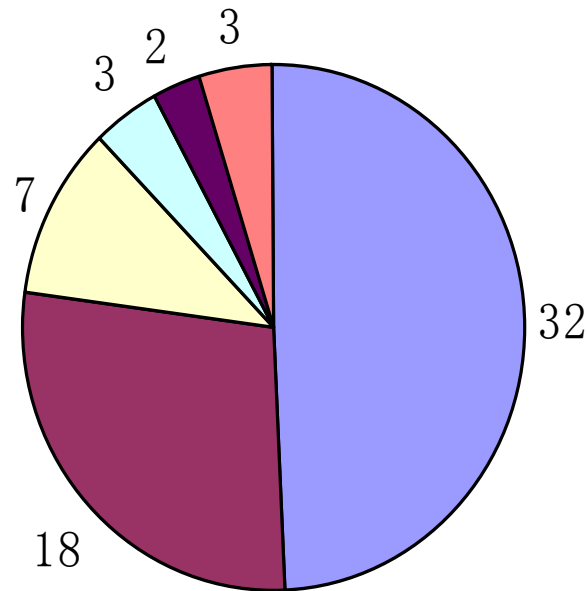
Seasonal different





Cargo and Containers from US

Commodities



- waste paper
- wood packing material/logs
- raw feed material
- cotton
- container
- others



中国检验检疫科学研究院

Chinese Academy of Inspection and Quarantine





Cargo and Containers from Other Asia Countries

Data period: 2005.5-2009.4

Country	Intercept times	Goods	Live/dead
Taiwan	38	Plastics, Stainless Steel, Wooden Pallet	2 live + 36 dead
Malaysia	28	Logs, Wooden Pallet, Metal Scrap	23 live + 5 dead
Singapore	5	Wooden Pallet, Container	2 live + 3 dead
Indonesia	5	Wooden Pallet, Wire	3 live + 2 dead
Korea	4	Wooden Pallet	1 live + 3 dead
Japan	4	Waste Paper, Wooden Box	3 live + 1 dead



Cargo and Containers from Pacific

Data period: 2005.5-2009.4

Country	Intercept times	Goods	Live/dead
Australia	4	Waste paper, Metal Scrap	4 live
Papua New Guinea	3	Logs	3 live
Solomon	2	Logs	2 live



Still some uncertain data

- Commodities from Europe/Africa?
- Ant correctly identified?

What quarantine Measures to take?

- Treatment should be taken to high risk commodities before transportation
- The containers should be sterilized too