

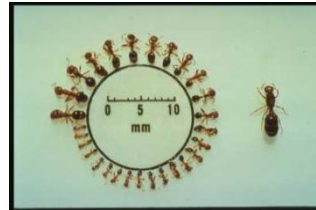
LFA Quick Sort

(Field "Guide")

Monomorphic



Polymorphic



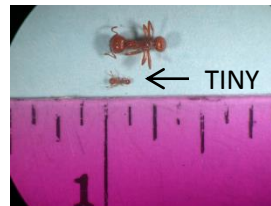
NOT LFA



TINY; 1/16 in or smaller



May be small but not TINY



NOT LFA

"Slow" moving
(very slow to moderate)



VERY fast moving, speedy, zippy

NOT LFA

Solid color: rusty, orange, brown



Yellow, black, bi-colored



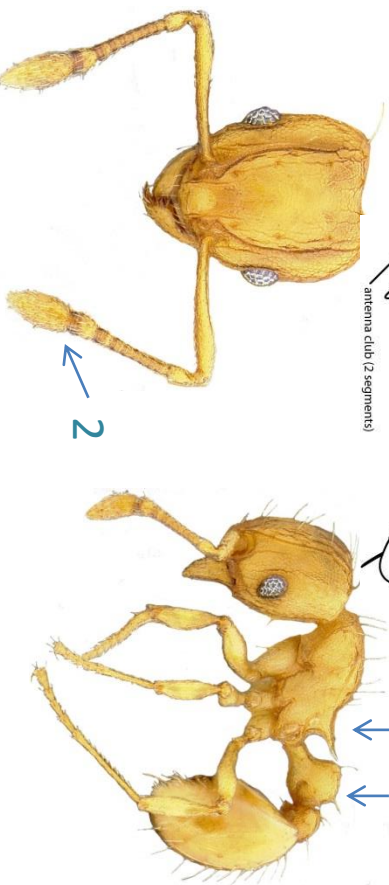
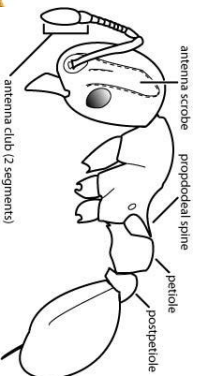
NOT LFA



**WARNING!!!! POSSIBLE LFA or
LOOK – A – LIKE BEWARE!!!!**

look closely under microscope and
have someone double check your ID

Is it Little Fire Ant?



Look for the following features in the order listed:

1. They have two "bumps" between the thorax and abdomen (a petiole and post-petiole). Yes?, go to 2
2. the last 2 segments of the antenna are much bigger than all the others (a 2-segmented antennal club). Yes?, go to 3
3. they have two long spines protruding from the end of the thorax that are almost long enough to reach to the first "bump" (long propodeal spines)

So if it has the two bumps AND the 2 bigger antenna segments AND the two long spines that reach all the way back to the bumps, then your ant is very probably a little fire ant.

LFA look-a-likes

These ants are present in Hawaii and look like Little Fire Ants. They are the same size, shape and approximate color



- Tetramorium similimum**
Different because:
- 3 segmented antennal club
 - Short spines
 - Round eyes (not teardrop shape)

- Solenopsis sp H101**
Different because:
- Pale yellow color
 - No spines
 - Tiny eyes



- Pheidole morens**
Different because:
- 3 antennal segments
 - Deep cleft in thorax
 - Polymorphic
 - Short spines on thorax

Monomorium pharaonis

Different because:

- 3 segmented antennal club
- No spines on thorax

